

# Maquet Moduevo Sky distributor

## Optimizing space

After the Slim, Mezzo and Twin distributors, Getinge's range of ceiling supply units Maquet Moduevo is completing its portfolio with a horizontal solution: Sky.

In Intensive Care Units, it allows a better patient access for the medical staff without disturbing patients' recovery. In Operating Rooms, Sky can be used for anesthesia stations and thanks to its optimized head clearance, the distributor can be placed in a safe way.

Available in different versions, Sky can also be equipped with adjustable shelves in order to support medical devices as well as the complete Maquet Moduevo range of accessories.



### Maquet Moduevo Sky's benefits include:

#### Workflow improvements

- Enlarging workplaces: thanks to its optimized head clearance, Maquet Moduevo Sky reduces footprint and allows medical staff to work in a larger environment.
- Usability and ergonomics: outlets and sockets directly available underneath the module.

#### Covering all needs

- Maquet Moduevo Sky is available in three versions: Classic, Advanced and Advanced with racks. All of them can offer up to three choices of panels lengths to suit your needs (470, 670 and 870 mm / 18.5", 26.4" and 34.3").

#### Wide choice of options

- An underside ambient light in option is creating a soothing atmosphere and facilitating the work and recording of the medical staff.
- Compatible with all Maquet Moduevo accessories thanks to the EPoS interface: handles, shelves, infusions equipment holders, cable management solutions...
- Shelf loading up to 50 kg / 110.23 lbs, adjustable height.
- Mechanical bars and EPoS interfaces on racks (both sides).
- Large shelf with control function.
- Smart accessory cable holder for cable management.



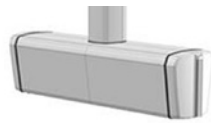
Three panels for outlets and sockets (including underneath).



Full range of accessories available.



Smart cable management.



Models	Sky Classic version	Sky Advanced version	Sky Advanced version with racks
Length	470, 670 and 870 mm (18.5", 26.4" and 34.3")		470, 670 and 870 mm (18.5", 26.4" and 34.3") with 400 mm (15.7") racks  670 and 870 mm (26.4" and 34.3") with 800 mm (31.5") racks (two shelves max.)
Panels for sockets & outlets	One underside and two big side panels (rear and front)		
Accessories positioning	2 lateral mechanical bars (no EPoS) : 60 kg / 132.27 lbs net load each	2 EPoS: 60 kg / 132.27 lbs net load each	2 EPoS: 120 kg / 264.55 lbs net load in global
Beams compatibility	Fixed and rotary columns Mechanical beams (without electro-pneumatic or electro-magnetic brakes)	Every Maquet Moduevo ceiling pendant (mechanical beams and motorized beam: Energy) with or without brakes	

This document is intended to provide information to an international audience outside of the US.  
Maquet (Suzhou) Co., Ltd . No.158 Fangzhou Road . Suzhou Industrial Park .  
215024 Suzhou . China . +86 (0) 512 62839880

[www.getinge.com](http://www.getinge.com)

