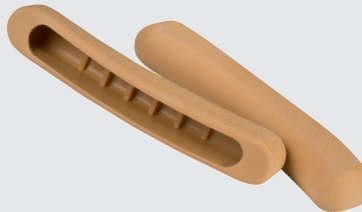


AXILA CRUTCHES FROM LIGHT METAL UP TO 120 KG



- Axila crutches made of light metal
- Tube silver anodized
- PU foam padding for armpit and handle (replaceable)

Article no. 162P



210 mm

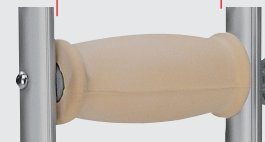


Article no. 163P



5-fold height adjustable
with screw

100 mm

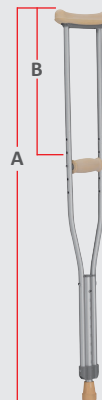


in the lower part 9-fold
height adjustable
by push button

Inner-Ø 19 mm



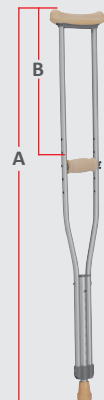
Tread Ø 45 mm
Article no. 719gr



12G

Measure A
Armpit height
133 cm – 153 cm

Maß B
Grip height
40 cm – 55 cm



12K

Measure A
Armpit height
112 cm – 132 cm

Maß B
Grip height
35 cm – 50 cm



MAX. load bearing capacity
up to 120 kg body weight



WEIGHT
950 g / Piece (Article 12G)
850 g / Piece (Article 12K)